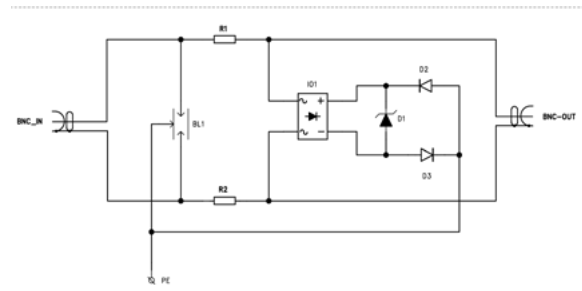
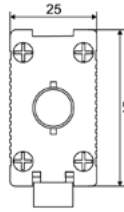
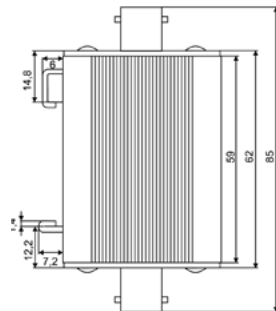


# IT Systems

LPZ 1-2-3 / IP20 / CE



## PZH HT-CCTV 6, PZH HT-CCTV 12

Hermi Transmission-CCTV is designed to protect video transmission equipment, which process the transferred video signal. The casing of this protector is made out of light alloy, which ensures high mechanical and thermal resistance.  $I_{max} = 5 \text{ kA}$ . It is recommended for use in the Lightning Protection Zones Concept at the boundaries of LPZ 1-2-3 according to EN 62305.

TYPE		PZH HT-CCTV 6	PZH HT-CCTV 12
Number of protected pairs		1	
Connector type		BNC (F/F, F/M)	
Nominal voltage	$U_N$	6 V	12 V
Max. continuous operating voltage	$U_C$	7,2 V	14,4 V
Rated load current	$I_L$	300 mA	
C2 Max. discharge current (8/20)	$I_{max}$	5 kA	
C2 Nominal discharge current $I_n$ (8/20)	$I_n$	1 kA	
C2 Voltage protection level at $I_n$	$U_P$	22 V	44 V
C3 Voltage protection level at $1 \text{ kV}/\mu\text{s}$	$U_P$	10 V	20 V
Response time	$t_A$	< 30 ns	
Data rate		10 MBit/s	
Parasitic capacitance	C	< 27 pF	
Series impedance per line	R	10 $\Omega$	
LPZ		2-3	
Protection type		IP20	
Operating temperature range	$\theta$	-40°C - +80°C	
Category tested acc. to IEC 61643:21-2000		A2, B2, C2, C3, D1	
Article number		<b>77 57 001</b>	<b>77 57 002</b>