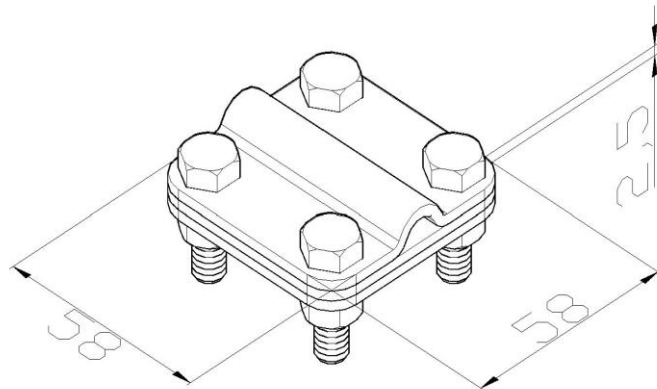


**Product:** KON02

**Product code:** 40632

Contact clamp for lightning conductor



|   |   |
|---|---|
| <b>Standard:</b>                          | EN 62561-1:2017: Lightning Protection System Components (LPSC) - Part 1: Requirements for connection components |
| <b>Dimensions:</b>                        | Length: 58 mm   |
|   | Width: 58 mm  |
|   | Height:   |
|   | Weight: 0,28 kg   |
|   | Conductor dimensions 1: 240 mm <sup>2</sup>   |
|   | Conductor dimensions 2: P up to 30 mm   |
| <b>Material:</b>                          | copper/stainless steel/stainless steel  |
| <b>Withstand lightning current class:</b> | H   |