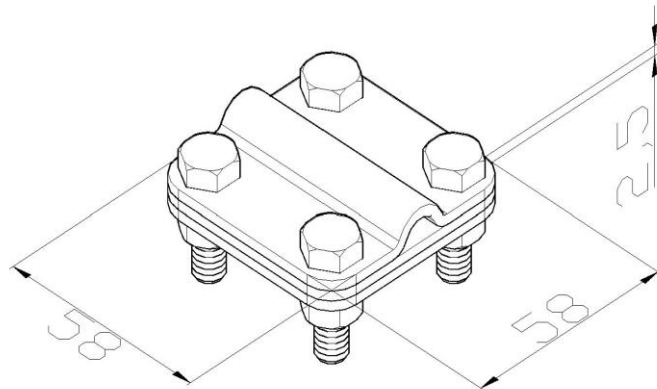


**Product:** KON02

**Product code:** 40631

Contact clamp for lightning conductor



|                                           |                                                                                                                 |
|-------------------------------------------|-----------------------------------------------------------------------------------------------------------------|
| <b>Standard:</b>                          | EN 62561-1:2017: Lightning Protection System Components (LPSC) - Part 1: Requirements for connection components |
| <b>Dimensions:</b>                        | Length: 58 mm                                                                                                   |
|                                           | Width: 58 mm                                                                                                    |
|                                           | Height:                                                                                                         |
|                                           | Weight: 0,27 kg                                                                                                 |
|                                           | Conductor dimensions 1: 185 mm <sup>2</sup>                                                                     |
|                                           | Conductor dimensions 2: P up to 30 mm                                                                           |
| <b>Material:</b>                          | copper/stainless steel/stainless steel                                                                          |
| <b>Withstand lightning current class:</b> | H                                                                                                               |